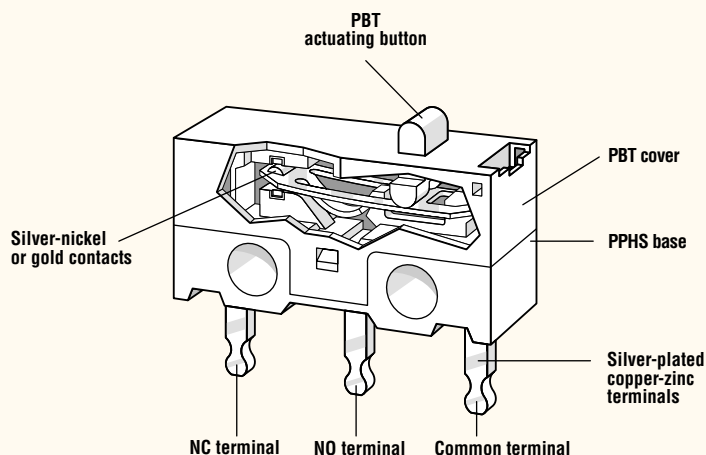


# SUBMINIATURE DG Series

## Features

- Small dimensions, just 0.504" x 0.228" x 0.256" (12.8mm x 5.8mm x 6.5mm)
- Depending on model, contact rating is suitable for low switched currents and voltages for light-current applications with loads of up to 3 amps 125VAC
- Available with or without auxiliary actuator
- Can be fitted to circuit boards in upright position or horizontally with terminals on left or right
- Mechanical life: min. 1 x 10<sup>6</sup> operations (depending on model)



## Electrical Ratings

Switch Series	EN61058 Rating	UL1054 Rating	Electrical Life at Rated Load According to UL (Min. Operations)
DG1	N/A	3A, 125VAC; 2A, 30VDC	6,000
DG2	N/A	0.05A, 30VDC	6,000
DG4	N/A	1A, 125VAC; 1A, 30VDC	6,000

## Specifications

### Electrical

Temperature Rating: -25 °C to +85 °C

Flammability Rating: UL9V-O

### Materials

Base: PPHS

Cover: PBT

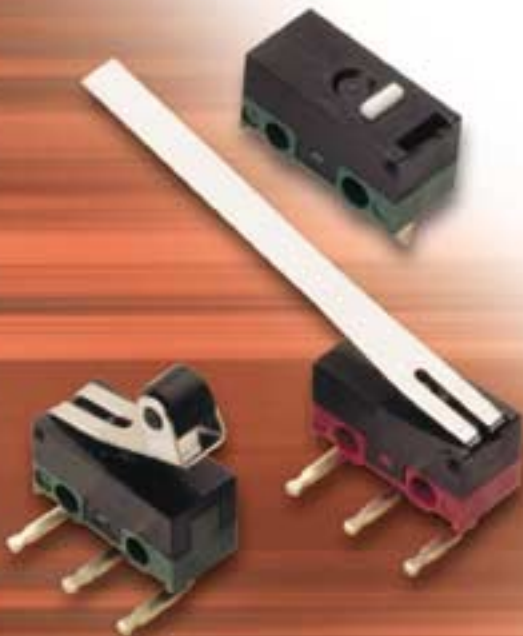
Actuator: PBT

Auxiliary Actuator: Stainless Steel

Terminals: Silver-Plated Brass

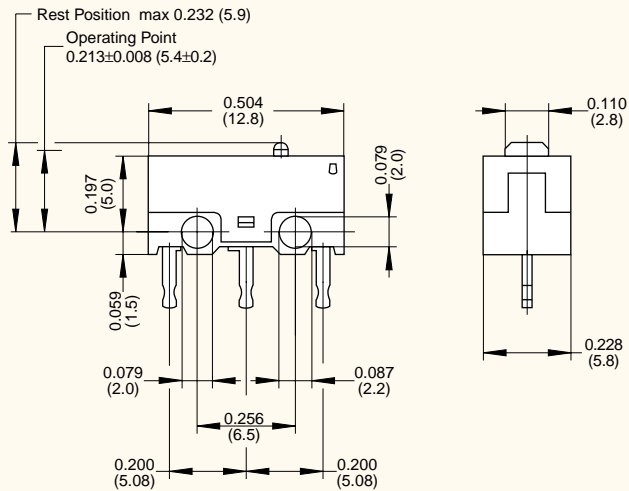
Contacts: Silver Alloy (DG1, DG4)  
Gold Flash, Gold (DG2)

PBT = Polybutyleneterephthalate • PPHS = Polyphenylene sulphide

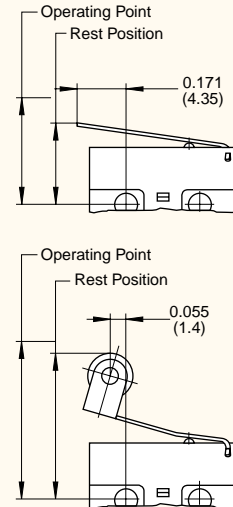




### Dimensions inches (mm)

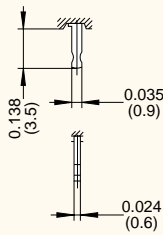


### Auxiliary Actuators inches (mm)

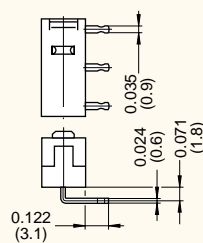


### Terminal Options inches (mm)

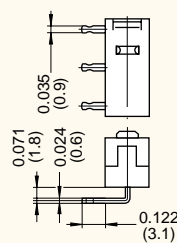
#### PCB Terminals Straight



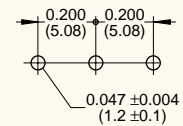
#### PCB Terminals RH Side



#### PCB Terminals LH Side



#### Drilling Pattern



### Actuator Specifications

Actuator Type	Switch Type	Maximum Operating Force (gms.)		Maximum Pre-Travel inches (mm)	Operating Point inches (mm)	Maximum Over-Travel inches (mm)	Max. Movement Differential inches (mm)	Max. Rest Position inches (mm)
		DG1, DG2 (B)	DG2, DG4 (C)					
AA		140	75	0.020 (0.51)	0.213±0.008 (5.41±0.20)	0.008 (2.20)	0.007 (0.18)	—
LA		45	30	0.071 (1.80)	0.268+0.031/-0.016 (6.81+0.79/-0.41)	0.022 (0.55)	0.020 (0.51)	0.196 (4.98)
RA		60	35	0.059 (1.50)	0.488±0.020 (12.40±0.51)	0.022 (0.55)	0.020 (0.51)	0.322 (8.18)

### Ordering Information

**DG** | **1** | **3**

**Series/Prefix** | **Code** | **Contact Configuration**

Code	Current Rating (UL & CSA)
1	3A, 125VAC; 2A, 30VDC
2	0.05A, 30VDC
4	1A, 125VAC; 1A, 30VDC

3 SPDT

**B** | **1** | **AA**

Code	Button Color/ Operating Force
B	Grey / 140 grams*
C	Black / 75 grams**

\*140 gms not available on DG4  
\*\*75 gms not available on DG1

Code	Terminal Type
1	PCB, Straight
2	PCB, RH Side
3	PCB, LH Side

Code	Actuator Type
AA	Button (without Auxiliary Actuator)
LA	Straight Auxiliary Actuator, 0.169" (4.3mm) Long*
LB	Straight Auxiliary Actuator, 0.500" (12.7mm) Long*
LC	Straight Auxiliary Actuator, 1.012" (25.7mm) Long*
RA	Roller Auxiliary Actuator, 0.075" (1.9mm) Long*

Actuator Length

\*Actuator lengths are dimensioned from center line of switch mounting hole.